

STOCK AND CUSTOM COATINGS GUIDE



This color selection represents a variety of the powder coatings SRS Coatings has as stock items in our shop, or can be ordered. It is important to note that a large part of our business is custom formulation of powder and liquid coatings to specific criteria. If you cannot find the exact coating you would like, then please let us know. We would be delighted to build a product around your application.

RED - YELLOW - ORANGE



P009-RD02
Dark Red 90 Gloss



T009-RD03
Red 90 Gloss



T241-RD129
Red Texture



T009-RD01
Red 90 Gloss



T009-OG26
International Orange
90 Gloss



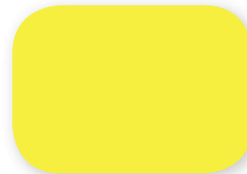
T009-OG01
Safety Orange 90 Gloss



T009-YL71
Yellow 90 Gloss



T009-YL14
FS 13538 Yellow
90 Gloss

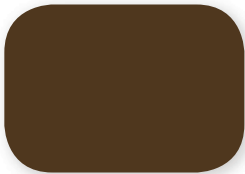


T009-YL01
Yellow 90 Gloss



C209-YL130
Tractor Yellow 90 Gloss

BROWN



C209-BR358
RAL 8028 Terra Brown
90 Gloss



P004-BR23
Bronze 40 Gloss



T032-BR62
Brown Texture

GREEN



P000-GN264
FS 34094 OD
Green Flat



T007-GN16
Traffic Green
70 Gloss



T007-GN13
FS 14066 D.O.T.
Green 70 Gloss

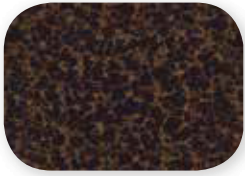


C006-GN03
Green 60 Gloss

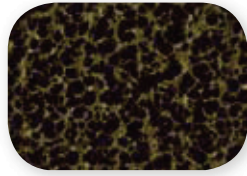


C209-GN411
Tractor Green
90 Gloss

SPECIALTY FINISHES



T375-BK07 *
Copper Vein



T375-BK10 *
Gold Vein



T375-BK26 *
Silver Vein



T075-WH34
Black/White Vein



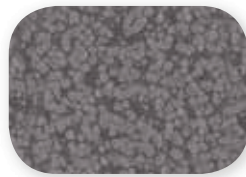
T075-BK211 ■
Copper Vein Exterior



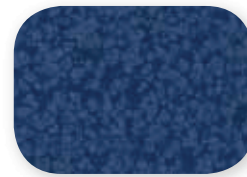
T064-BR24
Bronze Hammertone



T064-GR660
Gray Hammertone



T064-GR05
Silver Hammertone



T064-BL95
Blue Hammertone



T064-GN81
Green Hammertone



T353-GR06 *
Silver Metallic 30 Gloss



C356-GR1342 *
Silver Metallic 60 Gloss



T358-GR539 *
Chrome Metallic 80 Gloss



T357-GR105 *
Silver Metallic 70 Gloss



T391-BG290 *
Bronze Metallic Texture



T391-GR1031 *
Silver Metallic Texture



T353-YL02 *
Brass Metallic 30 Gloss



T026-BR340 ■
Statuary Bronze 60 Gloss



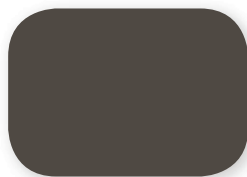
T291-BR251 ■
Oil Rubbed Bronze Texture



T022-BR189 ■
Oil Bronze 20 Gloss



C292-GR494 ■
Steel Gray Texture



T028-GR02 ■
Steel Gray 80 Gloss



T025-BR01 ■
Bronze 50 Gloss



T091-GR309
Mock Rock Texture



C291-GN20
Patina Texture



T091-GN57
Verdigris Texture

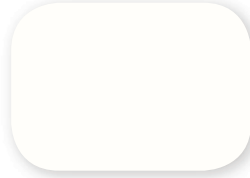


T091-BR47
Rust Texture

PRIMER



E305-GR533 **
Gray Primer



E305-WH243 **
White Primer



H304-GR312 **
Gray Anti-Gassing
Primer



E396-GR1372 **
Gray Zinc
Rich Primer

If a clear topcoat finish is required or preferred.

T209-CL01 90 Gloss Clear Polyester TGIC
T002-CL02 20 Gloss Clear Polyester TGIC
T909-CL05 90 Gloss Superdurable Clear Polyester TGIC

- * To maintain the appearance of exterior metallic finishes a clear topcoat is recommended.
- ** It is suggested that these products be applied as a topcoat to interior products only.
- Product exhibiting a metallic appearance and formulated for exterior use without requiring a clear topcoat.

Important notes about our stock coatings:

- Exterior powders start with a T, C, or P.
- Metallic exterior powders (T353-GR06, etc.) require a clear coat for exterior durability due to the effects of weathering on the metal flakes used to create the metallic appearance.
- H and E powders are not suitable as exterior topcoats if you need color and gloss stability.
- If your preferred finish is not shown, then please let us know. Many coatings are customized for special applications and not shown here.

